



WESTLAKE  
ACADEMY FOUNDATION

# 20th Annual Blacksmith Fund Drive

September 2023

Dear Westlake Academy Parents & Friends:

This is such a wonderful time to be a Blacksmith! Campus is buzzing with excitement and pride as we celebrate the 20th Anniversary of Westlake Academy. It is in this celebratory spirit that I am writing today to invite you to join me in supporting our exceptional school through the 2023-24 Blacksmith Annual Fund.

Westlake Academy continues to thrive as one of the most prestigious public Charter schools in the country. We are consistently ranked in the Top 1% of high schools nationally. WA seniors continue to outperform the world; 80% of the Class of 2023 received their IB diplomas compared to the 79% world average. The Academy enjoys a 100% graduation rate and students enter their best-fit college or university with a significant number of college credits, thanks to their performance on IB and AP exams. Our graduates have been consistently accepted to the Top 50 universities in the U.S. We couldn't be more proud of our WA alumni!

Despite our students' impressive academic record each year, we remain underfunded by the State of Texas simply because we're a Charter school. This year, traditional ISDs will receive \$13,290 per student in funding from the State and local property taxes. WA will receive \$8,775 per student from the State and \$0 from property taxes. That's \$4,515 less per student.

This gap is further widened by the very nature of an IB education. It costs more for all that the Academy does and wants for our students. For the 2023-24 academic year, the actual cost to educate an IB student at Westlake Academy is \$19,658.

As members of the Westlake Academy Family, we all share the responsibility to help bridge this funding shortfall. It's as important now as it was 20 years ago for us to come together, contribute toward the shared resources used by every student, and help every way possible to support our students and teachers. **We ask each family to join in and donate a minimum of \$2,500 for each of your WA students or your family's best gift.**

Every donation absolutely counts.

Our biggest fundraising initiative for the Blacksmith Fund takes advantage of North Texas Giving Day on **September 21, 2023**. Now through midnight on Thursday the 21st, folks across DFW will donate to their favorite charities. It's the nation's largest single day of giving! We call it "**Blacksmith Giving Days**" as a fun way to unite our community, inspire participation, and celebrate our Family of Givers. Throughout the day, we watch the "Schools Leaderboard" with immense gratitude at the level of caring and support that WA donors show our Blacksmiths!

**Early giving is open now!** Visit [WestlakeAcademyFoundation.org](https://WestlakeAcademyFoundation.org) and click on the big "Donate Here" button or scan the QR code to the left. Every day is a fine day to support WA students!

*"Once we visited Westlake Academy, we made a commitment to sacrifice in any way to support our child's education. Even though we aren't charged tuition, our family views it as our primary Making our Blacksmith donation is a no-brainer for us."*

*~MYP/DP Parents*





Should your family prefer to “pledge now, pay later,” please just let us know your giving plans. We can include your gift amount in our Giving Day totals and your family on our Honor Roll of Donors.

For Westlake Academy to remain a “best in class” institution for students, it is mission critical that parents come together, share in the responsibility to bridge the funding gap, and donate to the Blacksmith Fund.

Let's do what we do, Blacksmiths!!!

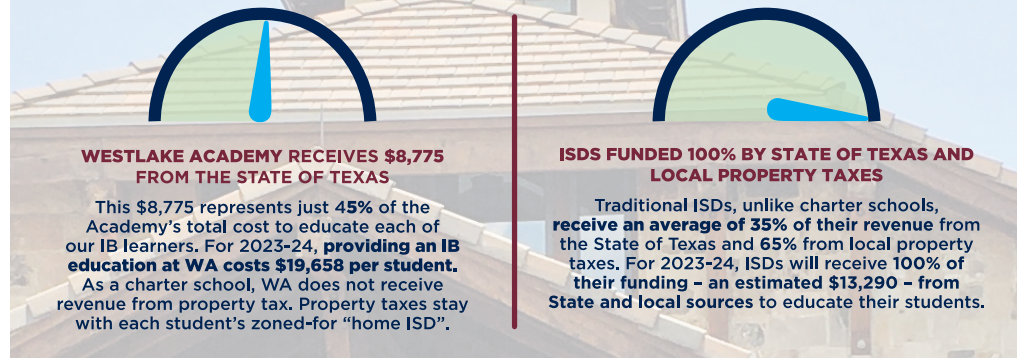
*Thank you!  
Shelley*

*“Why does our family donate toward an Academy education when public school is “free”? It is more important than ever to provide our children with the best education possible. Through the Blacksmith Fund, we invest in our children being at WA because WA is invested in our children.”*

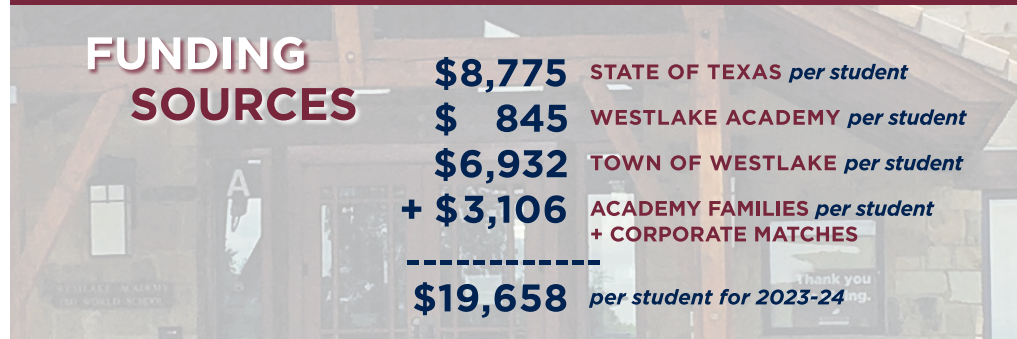
*~PYP Parents*

## It ALL starts with...

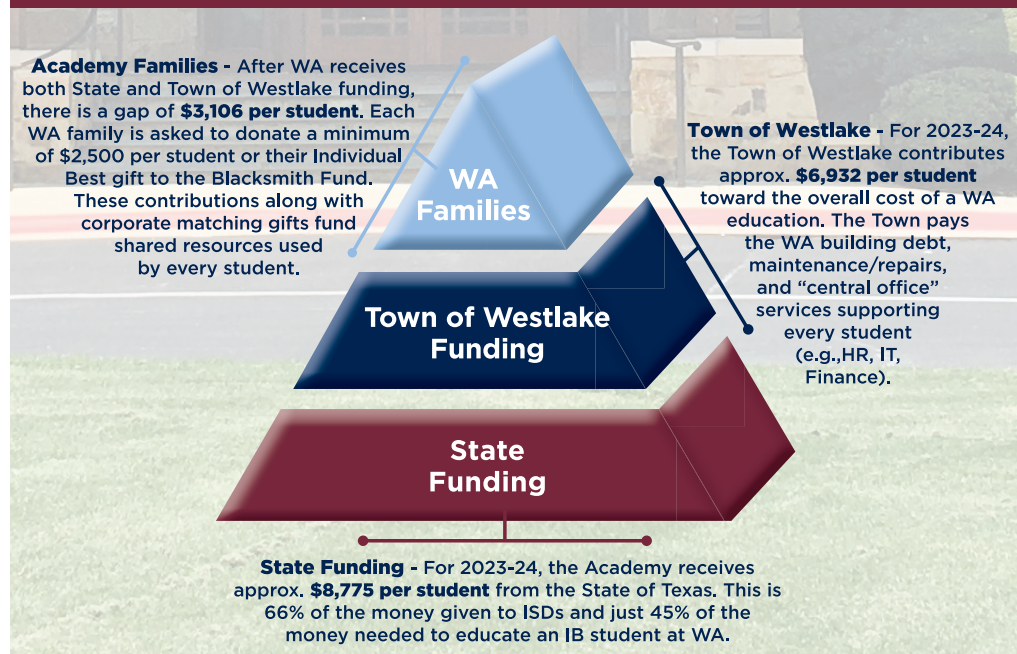
### Charter School Funding vs. ISDs



### Did you know it costs \$19,658 for a WA education?



### We need YOU to help move the needle to the TOP!



SMyers@WestlakeAcademy.org  
817-490-5722  
WestlakeAcademyFoundation.org